

MONTHLY MEMBERSHIP PROGRESS REPORT

LOCATION INDIA

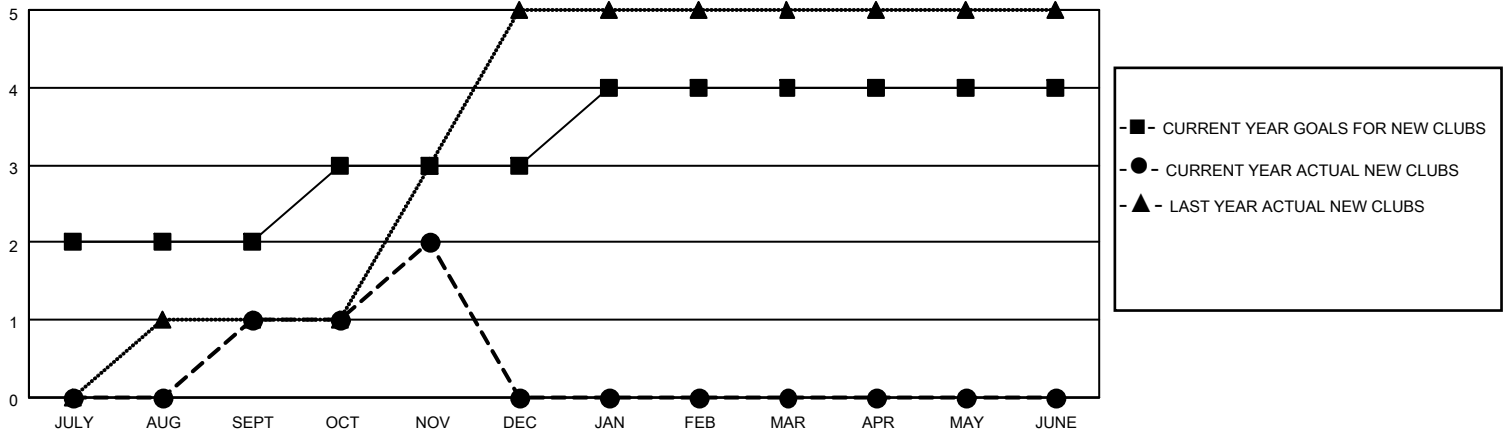
District 322 D

Results as of: 11/30/2021

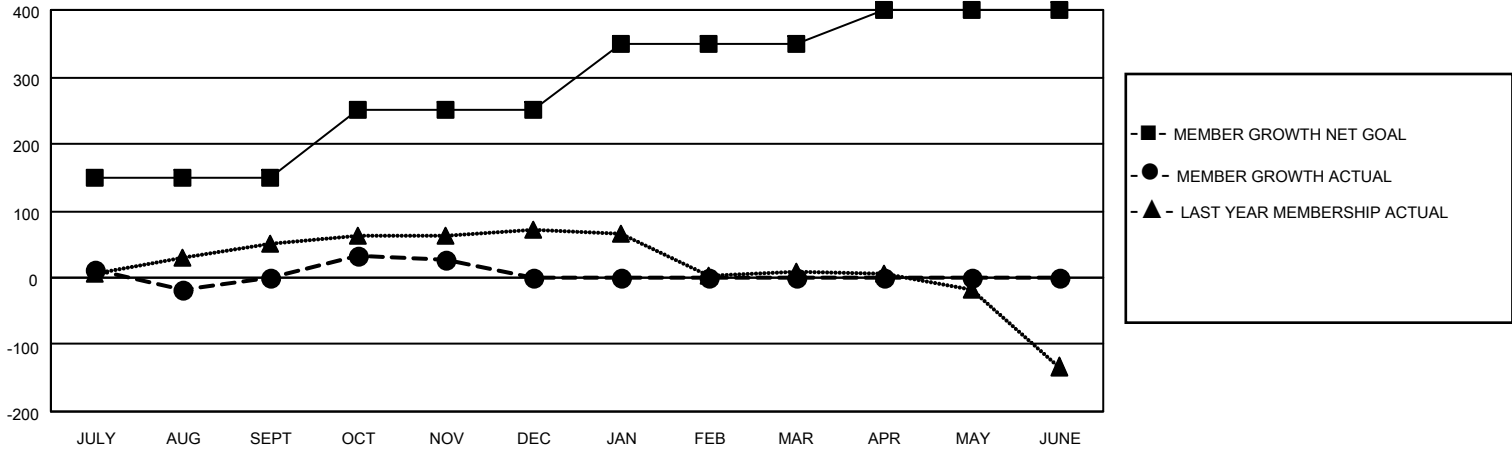
Clubs			
RESULTS FOR 2021-2022			
QUARTER	NEW CLUB GOAL	NEW CLUBS	DROPPED CLUBS
JULY/AUG/SEPT	2	1	3
OCT/NOV/DEC	1	1	1
JAN/FEB/MAR	1	0	0
APR/MAY/JUNE	0	0	0

Members			
RESULTS FOR 2021-2022			
QUARTER	MEMBER GROWTH NET GOAL	MEMBER GROWTH ACTUAL	DROPPED MEMBERS ACTUAL (including transfers)
JULY/AUG/SEPT	150	76	75
OCT/NOV/DEC	100	75	48
JAN/FEB/MAR	100	0	0
APR/MAY/JUNE	50	0	0

GOALS AND ACTUAL NEW CLUBS CUMULATIVE



GOALS AND ACTUAL MEMBERS CUMULATIVE



DROPPED CLUBS: 4

29 CLUBS OF 81 ADDED 1 OR MORE NEW MEMBERS

GENDER DISTRIBUTION

MALE	2,092 (71.16%)
FEMALE	848 (28.84%)
NON BINARY	0 (0.00%)
PREFER NOT TO ANSWER	0 (0.00%)

DROPPED MEMBERS

[CLICK HERE FOR CUMULATIVE MEMBERSHIP DATA](#)

DECEASED	7
CLUB CANCELLED	65
OTHER	51
TOTAL	123

TOTAL FAMILY UNIT MEMBERS	1,218
FAMILY MEMBERS PAYING HALF DUES	682